

Regional Conference Tours June 9, 2023



26 East, Annapolis, by LOCH Collective

11am-12pm

The landscape architect worked with the family to design a small, flexible refuge for their 18th century historic home in Annapolis. The entire foundation of the house consisted of granite blocks from old ship hulls. Twelve tons of soil had to be excavated, removed, or amended from the site to achieve proper drainage.

Rainwater that lands in the garden and on the roof infiltrates into the soil or moves towards the basin, placed below the children's river pebble play area. The square lawn provides a soft play space for kids. An aerial hedge, lush ferns, and a tall bed of grasses enclose the open space, with the gravel terrace offering a place to sit, eat, and dance.



National Native American Veterans Memorial, Washington, DC, by Rhodeside Harwell (RHI)

10:30-11:30am

The Memorial is a beautifully sculpted addition to the grounds of the National Museum of the American Indian. There are three components of the Memorial: 1) the sculptural elements crafted by Harvey Pratt, the lead Memorial artist, 2) the hardscape features designed by the team's architects and landscape architects, and 3) the new native landscape which integrates the Memorial into the existing native landscape.



Photo courtesy of HDR © 2014 Dan Schwalm

University of Maryland-College Park with AMT Engineering

9am-12pm

The walking tour focuses on green infrastructure practices installed at UMD – College Park led by Michael Carmichael and supported by site experts, practitioners with in-depth knowledge and experience at the 3 built project sites. Participants will be able to view installed work and get an insight to the maintenance regimen that has been undertaken to support the facilities.

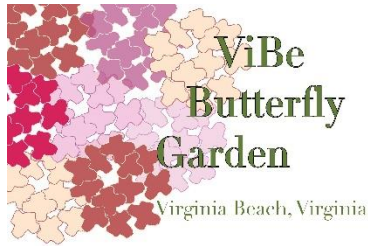
UMD has a vested interest in representing the highest quality initiatives for innovation in green infrastructure practices to educate the campus community, research and test methods that advance resiliency and enhance the image of the campus. Through a SW tour of recently implemented projects, the tour will view and discuss applications that demonstrate University commitments to the environment and represent installations for placemaking and beauty.



Silver Spring Metro Plaza, Silver Spring, MD by MKSK

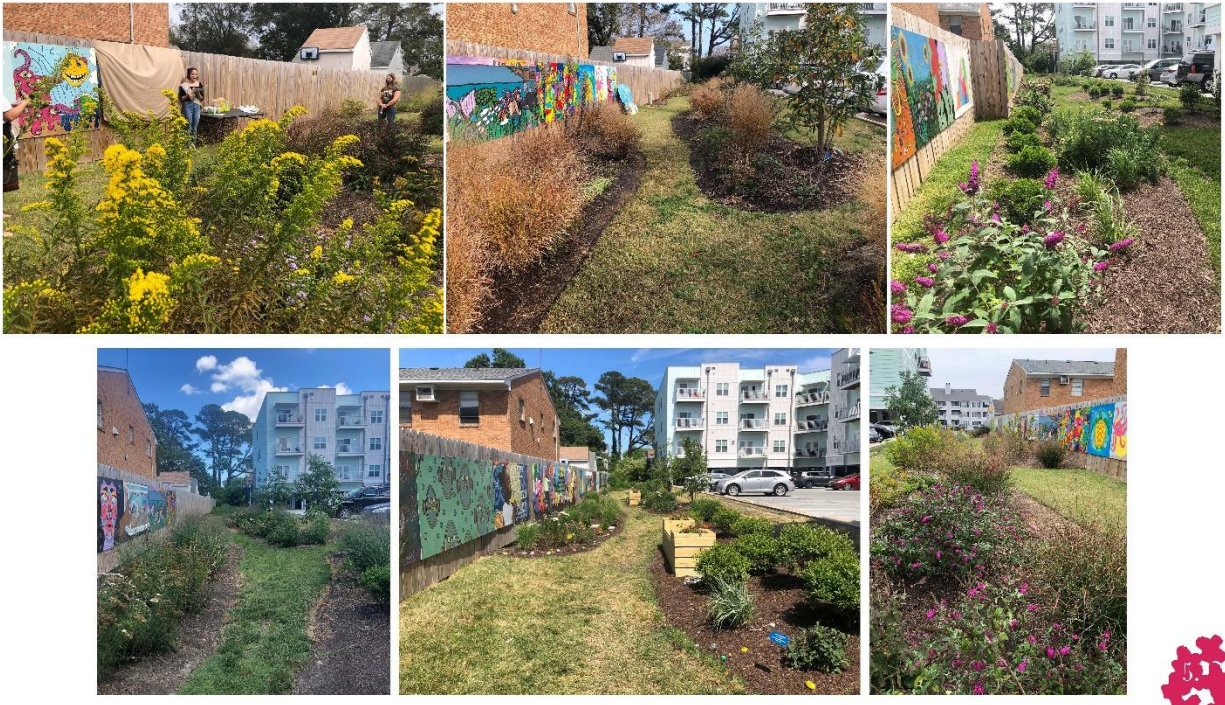
10:30-11:30am

Silver Spring Metro Plaza is an urban landscape with the lightest imaginable footprint. The project brief called for the renovation and activation of an existing 70' wide canyon between two 1970s office buildings that acts as an important pedestrian connection to/from the Metro station. Although plenty of people passed through it, the existing space was largely inhospitable. Because the existing waterproof membrane was in danger of failure, we were enjoined from disturbing it, requiring that the existing outdated paving and masonry planters remain. Any new elements would need to be installed atop these features while carefully distributing materials to avoid overstressing the structural slab below. Accordingly, MKSK draped a series of light yet expansive wood and metal furnishings over the existing plaza and planter elements. The gesture unifies the central section of the plaza, transforming it into a welcoming space that provides opportunities for individuals and small groups to enjoy the plaza daily, while also allowing it to be used for performances in the evenings and on weekends.



Site Photos

THE BUTTERFLY GARDEN IS AN ONGOING PROJECT RUN BY THE COMMUNITY. YOU WILL SEE THE GIRL SCOUT PROJECT AND PAINTED ROCKS FOR MENTAL HEALTH AWARENESS BELOW.



ViBe Creative District: Planning the Leftover Spaces, Virginia Beach

3:30-5pm

This tour will explore the history and examine the evolution of the rapidly growing ViBe Creative District. In order to gain a better understanding of the changes taking place throughout the district, the tour will include an overview of the district's history and will discuss the challenges and opportunities associated with placemaking, connectivity, and retrofitting existing car-oriented infrastructure. The tour will include stops at public art murals and installations, an infrastructure improvement project underway, public and private green spaces, and unique small businesses.