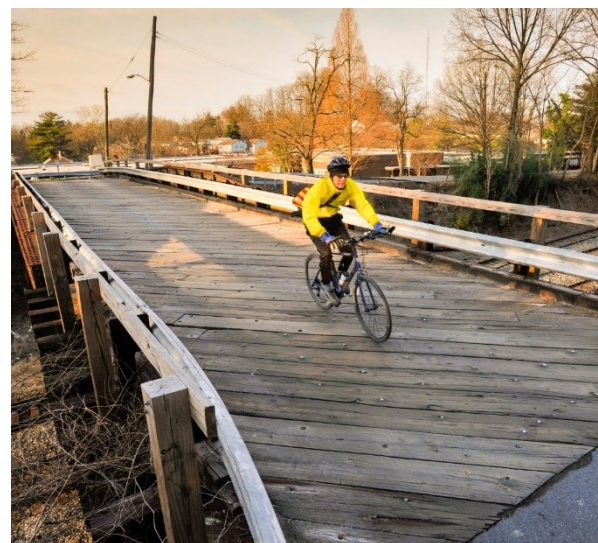
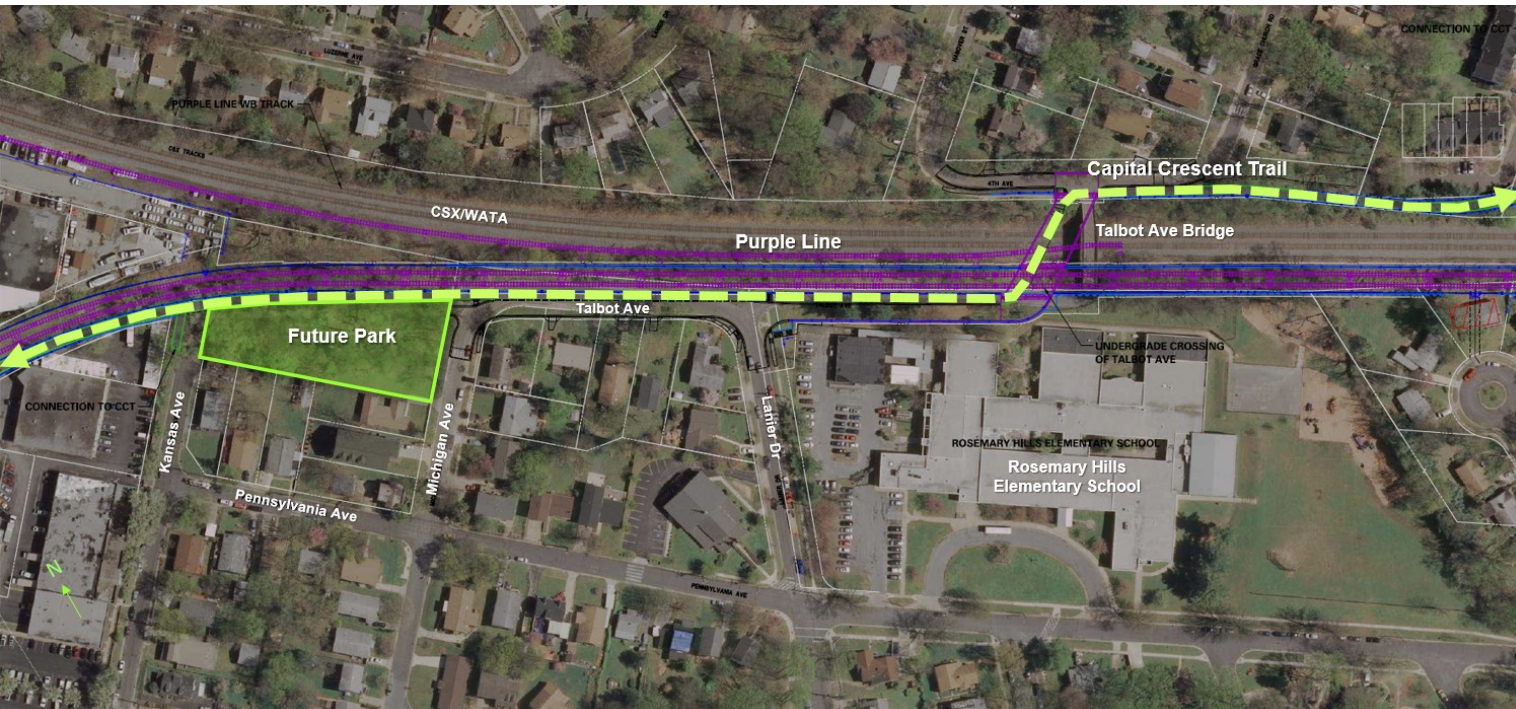


Fronting the Capital Crescent Trail (CCT) and Purple Line Light Rail, the project creates a 0.71-acre new park and rest stop with amenities in a historic African American minority community in Silver Spring, Maryland. The project intends to incorporate the historic Talbot Avenue Bridge to commemorate the unique culture of Greater Lyttonsville. The bridge represents a historic connection between segregated communities. The deteriorated structure was dismantled and placed in storage in 2019.

A landscape architect-led team collaborated closely with the community on project design. The concept envisions a central open space framed by social and cultural nodes, the re-installed bridge to create a sense of crossing and connection to surroundings, and the restored environment with tree canopy, bioretention and no-mow meadow. Residents and regional trail users will have places to gather and reflect, safe routes to stroll, and opportunities to observe trail and train activities. The Bridge Memorial will become an important portal for local Black history and a voice to tell the community's story.

“The very process of how this park design has come together feels in the spirit of bridge building -- connecting, sharing, listening, understanding, and working together for a common goal.” (Community comment)









PROJECT TEAM

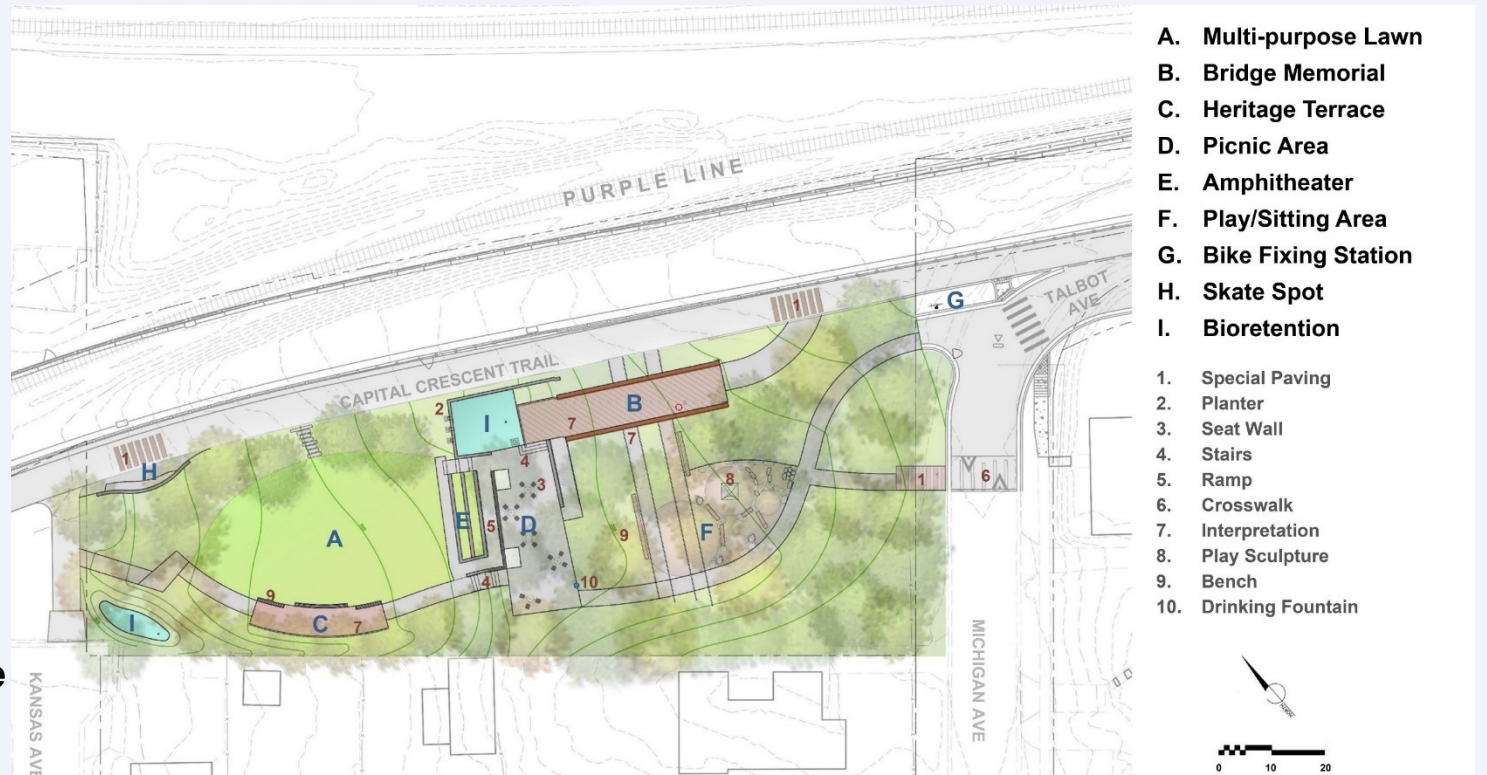


**M-NCPPC Montgomery Parks
Park Development Division**
Landscape Architecture & Planning

Hord Coplan Macht, Inc.
3D Modeling & Rendering

Clark I Azar & Associates, Inc.
Site Engineering

Talbot Avenue Bridge Committee



ASLA
POTOMAC
2023 Awards

FUTURE NEIGHBORHOOD PARK IN LYTTONSVILLE
M-NCPPC Montgomery Parks, Park Development Division