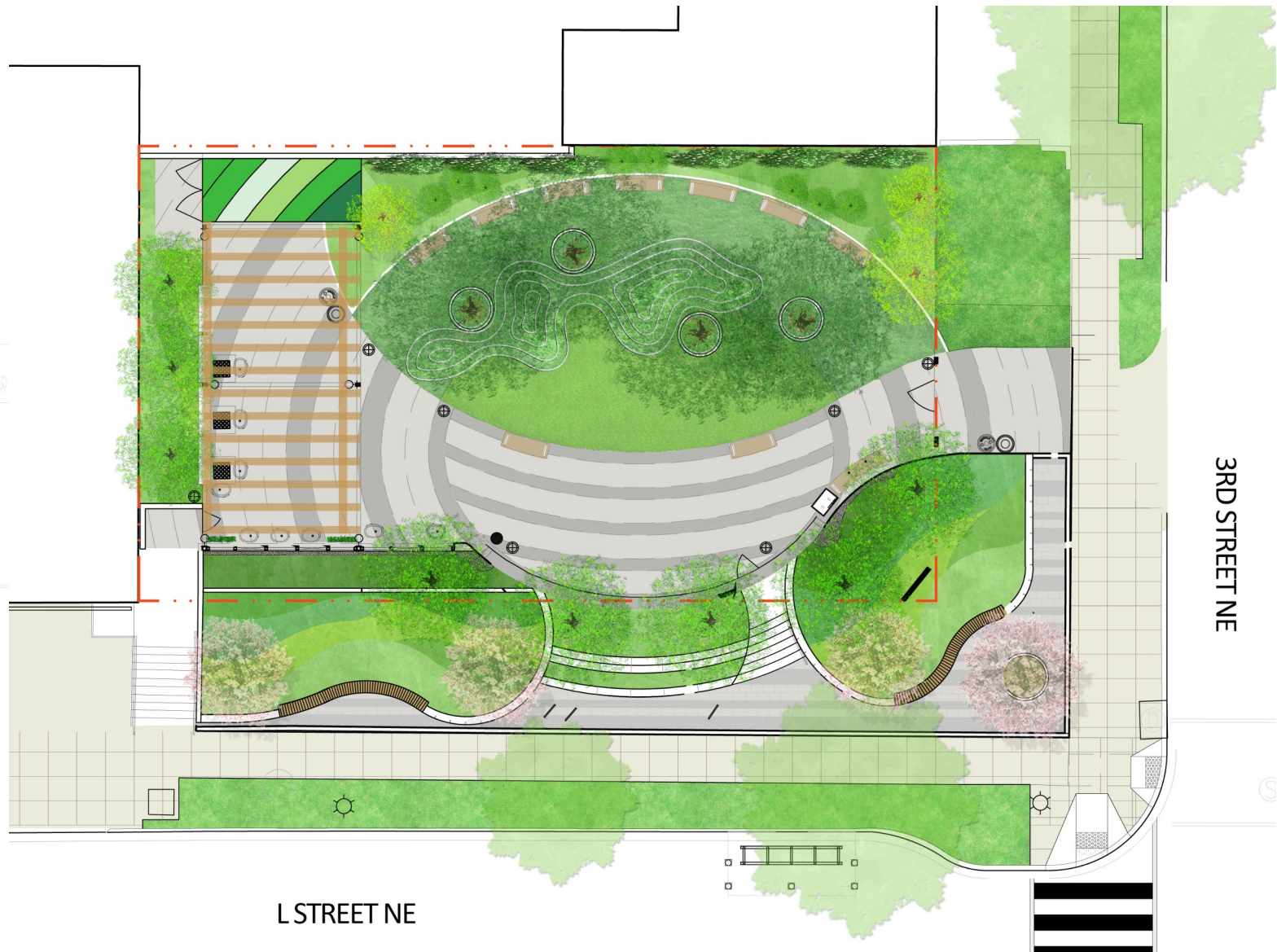
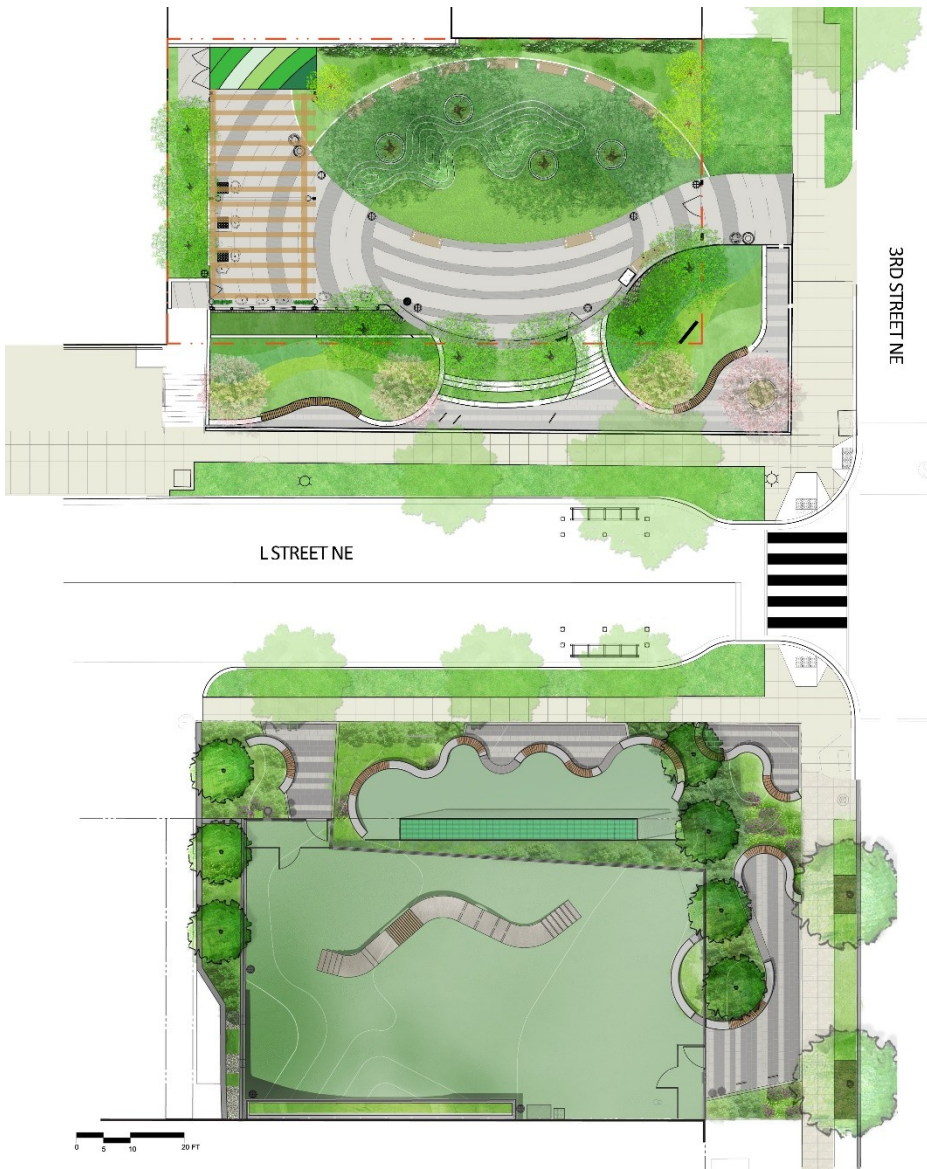


NoMa is a diverse community of new multi-family and mixed-use redevelopment. Through years of community engagement, in which the Landscape Architect participated, the group identified a lack of open space and the associated desire of the community to expand park spaces throughout the neighborhood. A local non-profit entity identified and purchased an 8700 square foot private parking lot in the NoMa neighborhood and established a public-private partnership to transform this site into a public open space. The project, called Swampoodle Terrace, followed a design-bid-build approach, in which the Landscape Architect was the prime design firm consultant and was responsible for managing the civil, electrical, structural, irrigation, geotechnical, plumbing, and arborist sub-consultations and represented the consultants at the ribbon cutting ceremony. The design integrates permeable turf mounds created using recycled glass-crete.

The west edge of the site is raised 11 feet above the street and gently slopes down towards 3rd street, creating an accessible entrance to the park. The project uses the grade change to integrate stormwater bioretention facilities that reduce runoff impacts from the site. Where, previously, NoMa lacked accessible parks, the public-private partnership has created a cultural hub at Swampoodle Terrace, a major contributor to this vibrant and growing community.





ASLA
POTOMAC
2023 Awards

Swampoodle Terrace
Lee and Associates, Inc



ASLA
POTOMAC
2023 Awards

Swampoodle Terrace
Lee and Associates, Inc



ASLA
POTOMAC
2023 Awards

Swampoodle Terrace
Lee and Associates, Inc

Swampoodle Terrace Credits

Lee and Associates, Inc (*Landscape Architect*)

NoMa Parks Foundation (*Developer*)

NoMa Bid (*Developer*)

DC Department of Parks and Recreation (*Owner*)

Forrester Construction (*Contractor*)

EXP Engineering (*Civil & Structural Engineer*)

Sam Kittner (*Photographer*)

KES (*Electrical Engineer*)

Irrigation Consultant Services (*Irrigation Design*)